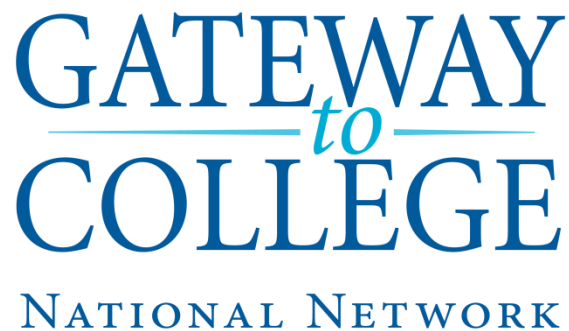


Postsecondary Pathways for Out-of-School Youth





Kisha Bird, Director of Youth Policy, CLASP and Project Director, Campaign for Youth-
CLASP seeks to improve the lives of low-income people. We develop and advocate for federal, state and local policies to strengthen families and create pathways to education and work. CLASP's youth policy work aims to advance policy and practice that will improve the education, employment, and life outcomes for youth in communities of high youth distress. a national coalition chaired by CLASP. The Campaign for Youth is a group of leading national youth serving and policy organizations dedicated to elevating the needs of youth who are out of work, out of school, and out of the mainstream and the policy and practice solutions needed to help them thrive.



Nick Mathern, Associate Vice President, Policy & Partnership Development, Gateway to College National Network - Nick Mathern is Associate Vice President of Policy & Partnership Development for Gateway to College National Network. Since 2005 he has brokered agreements between colleges, school districts, and state education agencies for training, professional development, and evaluation to implement the Gateway to College program. He has directed the award of \$20M in grants and contracts to programs serving opportunity youth. Nick is also responsible for the National Network's policy agenda, which aims to provide reengagement and supportive post-secondary pathways for opportunity youth.



Heather Ficht, Director of Youth Workforce Services, Worksystems, Inc. - Heather manages Worksystems' youth workforce programs and investments and ensures coordination and alignment with other systems including the Department of Human Services, K-12 schools, Community Colleges, and local governments. She serves on the Cradle to Career Steering Committee and the Oregon Career Information Systems' Board. Heather joined Worksystems in 2005. Heather has 12 years experience working with youth who are homeless and/or have a criminal background and she served as a school social worker in East Multnomah County.

Agenda

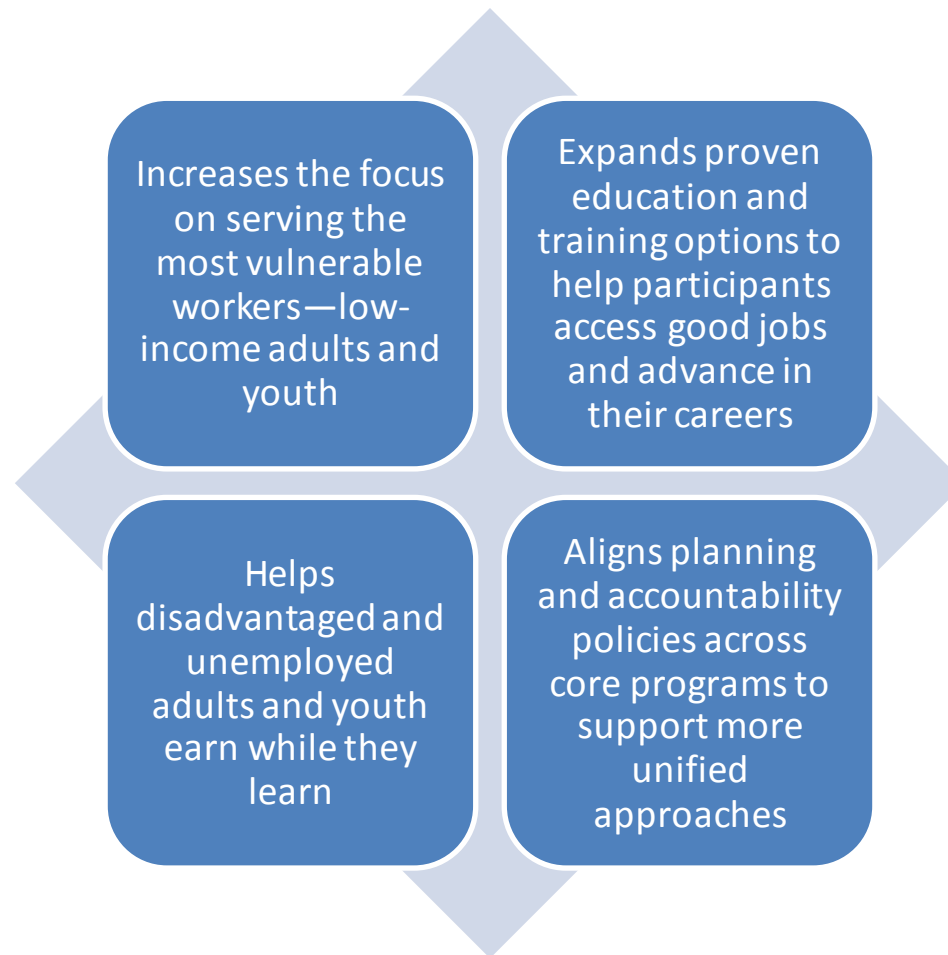
- Welcome and WIOA Highlights
- Postsecondary Pathways for Out-of-School Youth: Local Workforce Board Perspective
- Gateway to College National Network
- Open Discussion (Q & A)

WIOA and Youth: Highlights

Workforce Innovation and Opportunity Act

- Passed with wide bipartisan majority in Congress
 - Senate voted 93-5; House voted 415-6
- WIOA was signed into law by President Obama on July 22, 2014
 - Many provisions take effect July 1, 2015; others July 1, 2016
- First reauthorization of national workforce programs in 16 years
 - Updates the law for changes in the economy
 - Emphasizes newer, proven strategies in workforce development

New Opportunities for Low-Income and Low-Skilled Adults and Youth



WIOA Expands and Improves Services to Disadvantaged Youth

- **75%** of Youth funds required to be spent on out-of-school youth
- New **16-24** age range for out-of-school youth eligibility
- Requires at least **20 percent** of Youth Formula Funds be spent on paid and unpaid work experiences (including Summer Jobs programs)
- Adds youth “living in a high-poverty area” to the low-income criterion for youth activities
- In-school youth eligibility includes low-income individuals ages 14 to 21 *who are English language learners and those who have a disability*
- Encourages Career Pathways for adults and youth



Worksystems

Local Workforce Investment Board

serving

City of Portland, Multnomah and Washington Counties

Worksystems, Inc. is an equal opportunity employer/program. Auxiliary aids and services available upon request to individuals with disabilities.

To place a free relay call in Oregon dial 711.

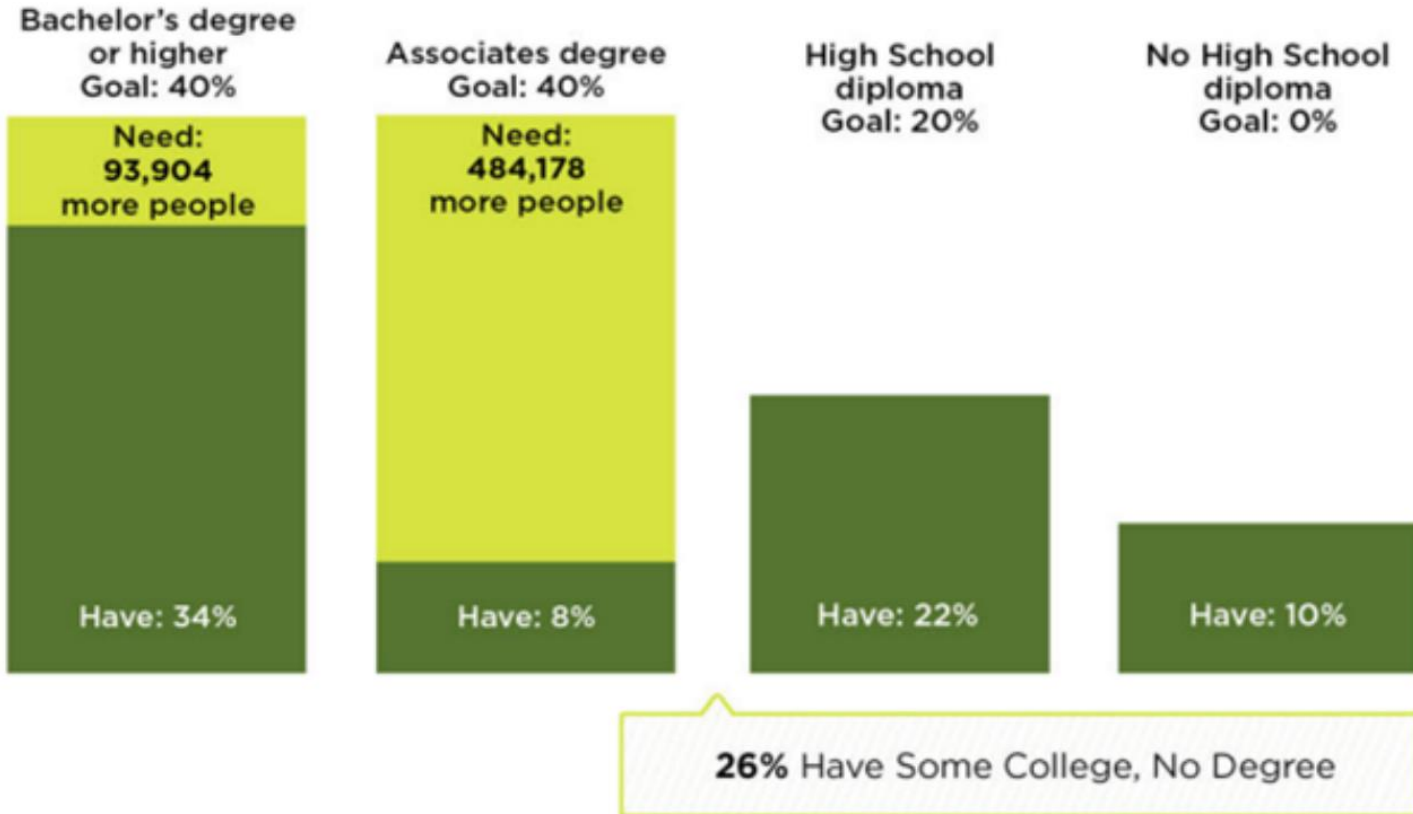
This program financed in whole or in part with funds provided by the U.S. Department of Labor.

Strategic Plan Goal

Ensure that youth and the emergent workforce have the academic and core competencies required by employers.

Primary strategy: Enhance work-based learning opportunities and post-secondary transitions and success for disconnected youth.

Oregon's 40-40-20 Goal



Career Connect Network (CCN)



CAREER

Career exploration
Work readiness training
Work experience

EDUCATION

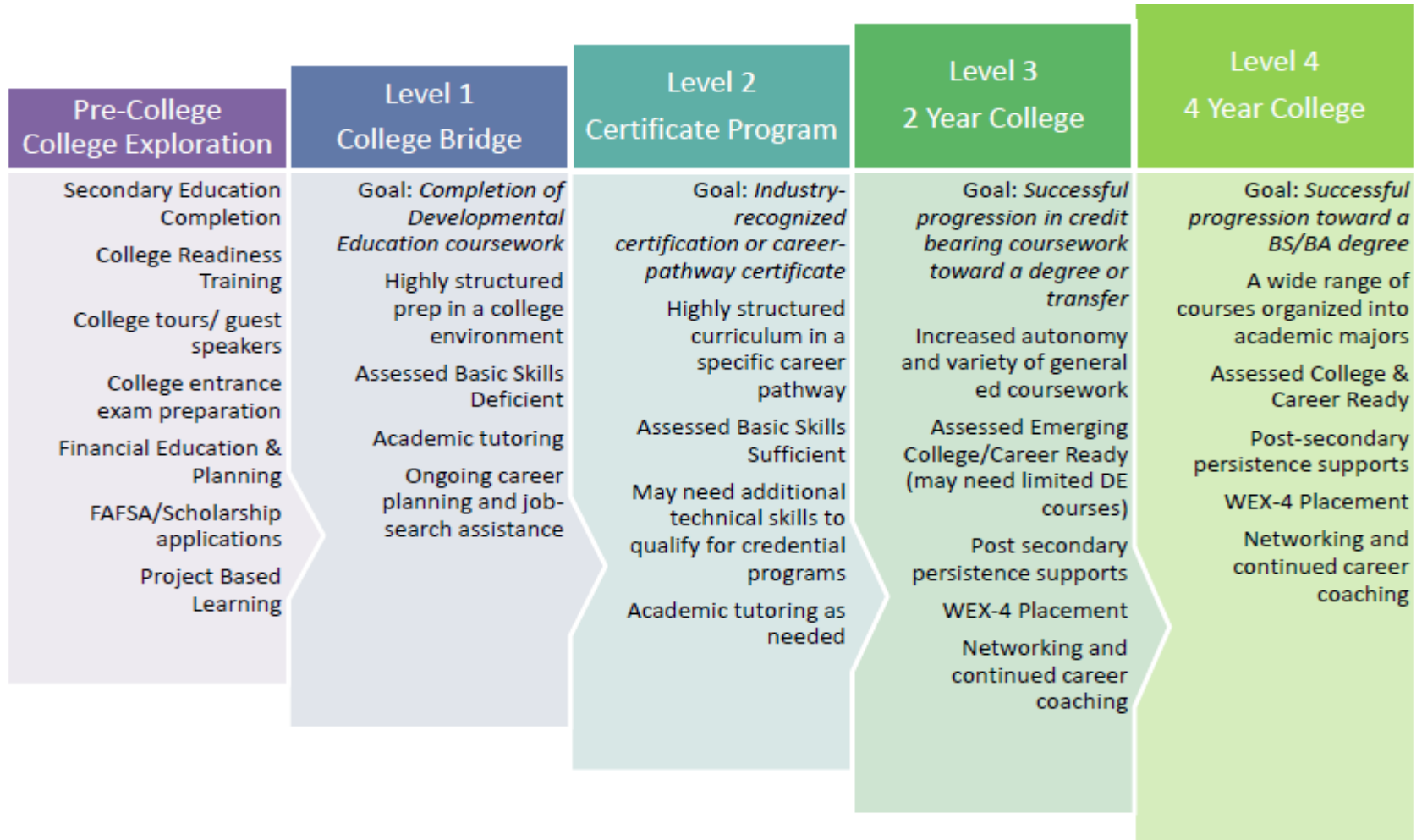
High school completion
College preparation

SUPPORT

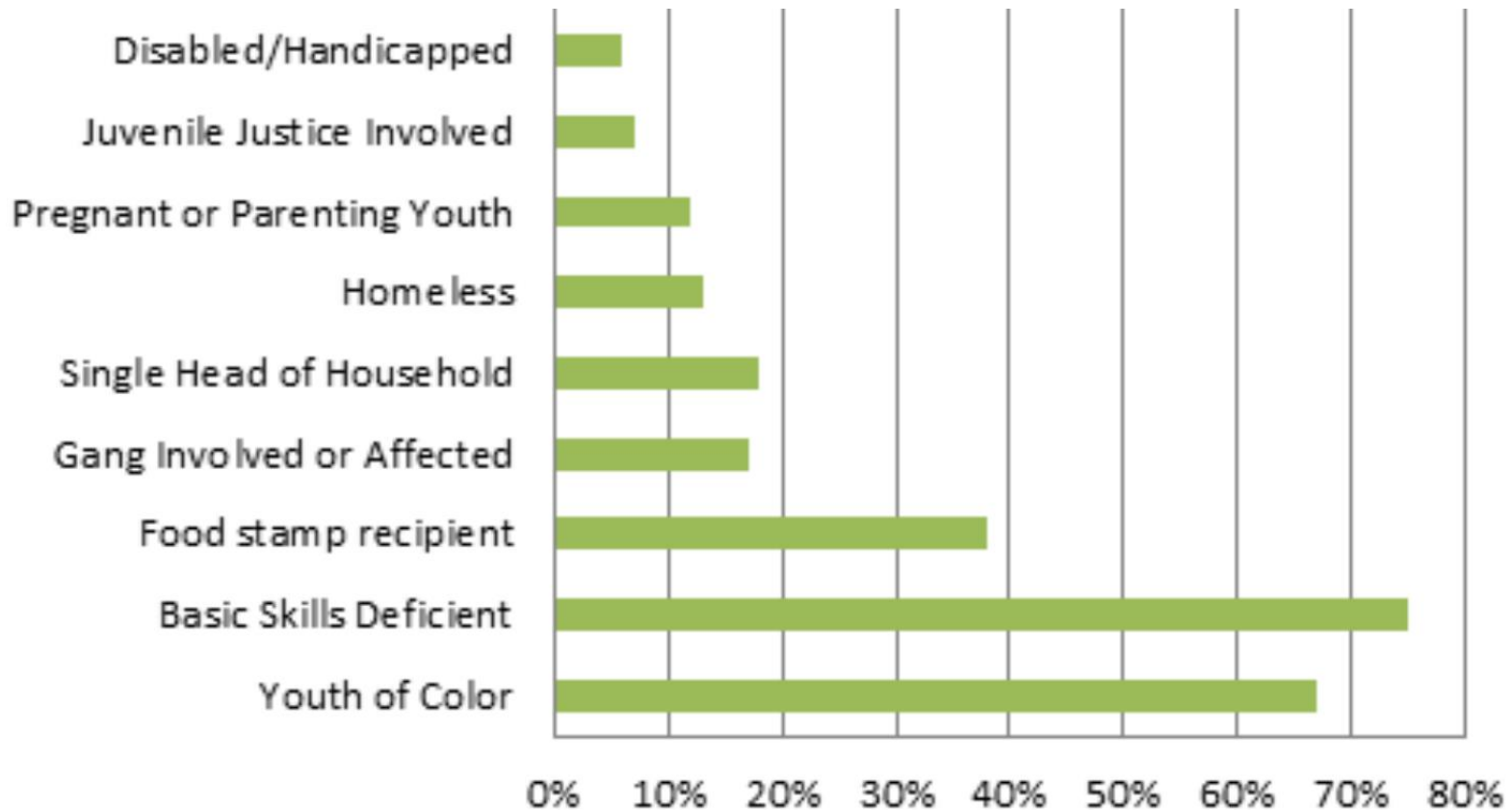
Multi-year case management



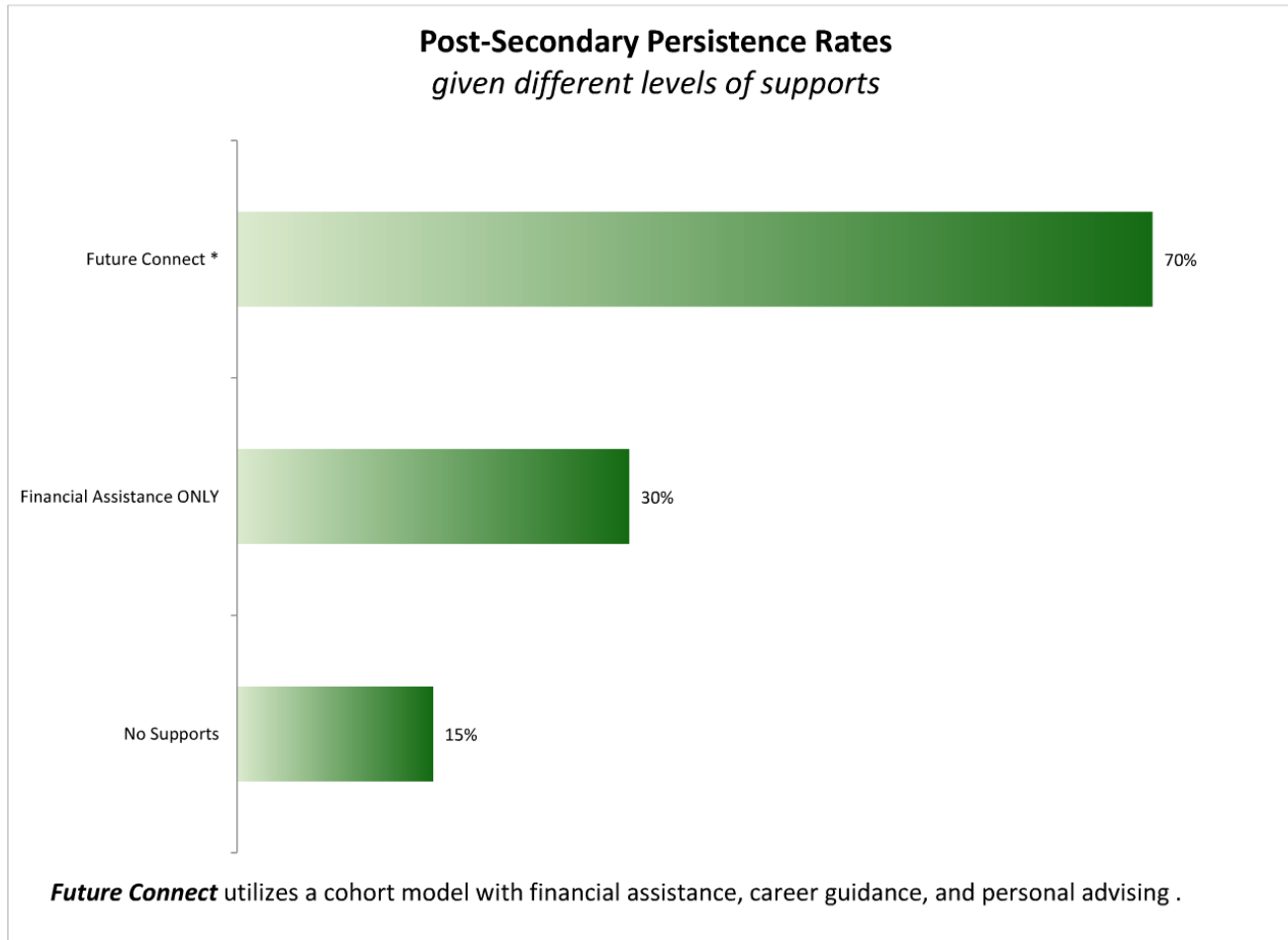
College and Career Readiness Competencies



Career Connect Network



Future Connect Partnership



Work-based Learning

Summer Works

a program of Worksystems



Outcomes – 2014 calendar year

- *Served 1,370 young people aged 16-24 years*
 - 69% attained a degree or certificate
 - 55% achieved at least a two grade level skill gain in literacy or numeracy
 - 76% were placed in jobs or post secondary education
- *No longer track*
 - Earned 18+ college credits
 - Wage increases



GATEWAY
to
COLLEGE
NATIONAL NETWORK

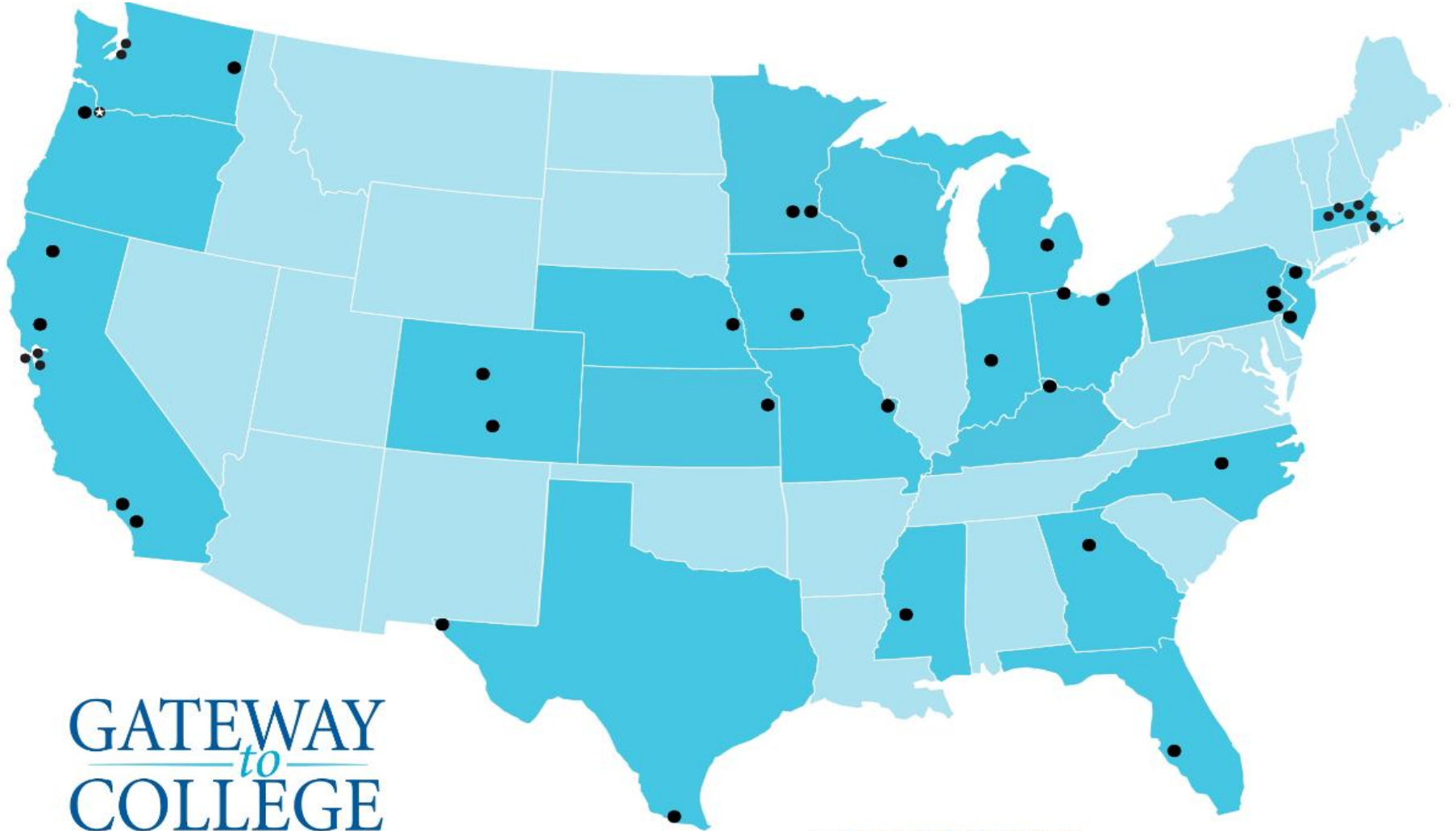
Youth Reengagement
through College &
Career Readiness

Building a movement

- Communities recognize the value of dual enrollment as a youth reengagement strategy.
- This not only serves a K-12 purpose; it also increases college and career readiness for otherwise struggling students.



We Are Part of a Broader Movement



GATEWAY
to
COLLEGE
NATIONAL NETWORK

- Gateway to College partner
- ★ Gateway to College National Network Office

Opportunity Youth Deserve Robust, Equitable Options

Essential Program Elements

- **Significant Dual Credit**
- **Sustainable Partnerships**
- **Holistic Student Support**
- **Innovative Teaching & Learning**
- **Intentional Collaboration**



Student Eligibility Profile

- Between 16 and 21 years old
- Out of school or on the verge of dropping out
- Behind in high school credits (for age and grade level)
- GPA of 2.0 or below
- Lives in an eligible school district

Network Wide	
Average Age:	17
Average High School GPA:	1.5
Average High School Credits at Entry:	43% of credits needed for a diploma

Gateway Student Experience

Gateway to College Experience: Up to 3 Years

Gateway Foundation

One Quarter or Semester
Developmental Ed Courses
College Skills Course

Gateway Continuation (comprehensive campus)

Multiple Quarters or Semesters
College Coursework to Meet High School Diploma Requirements
Advanced Coursework Toward Career Major

**Graduation
&
Further
College**

**Academic and Personal Support
Continues During the Entire Time Students are Enrolled**

Direct Impact

At 42 colleges in 22 states...

- 4,656 students were enrolled in 2013-14
- Students graduate high school with an average of 28 college credits
- K-12 revenue annually provides more than \$5.5M in scholarships for Gateway students (in addition to personnel, books, transportation, and meals)
- A 2012 third-party study showed that 73% of graduates continued to enroll in post-secondary education

Supporting Providers



How do we support our programs?

- Training
- Technical Assistance and Planning
- Data collection and analysis
- Program evaluation and continuous improvement
- Stakeholder engagement
- Recruitment & enrollment services
- Professional Development

QUESTIONS?



Contact Information

- Kisha Bird, Director, Youth Policy, CLASP
kbird@clasp.org
- Nick Mathern, Associate Vice President, Policy & Partnership Development, Gateway to College National Network
nmathern1@gatewaytocollege.org
- Heather Ficht, Director of Youth Workforce Services, Worksystems, Inc.
hficht@worksystems.org