

Finding and Using Data to Advocate for Children and Families Effectively

NAEYC Annual Conference 2009



**Danielle Ewen
Elizabeth Hoffmann
Hannah Matthews**

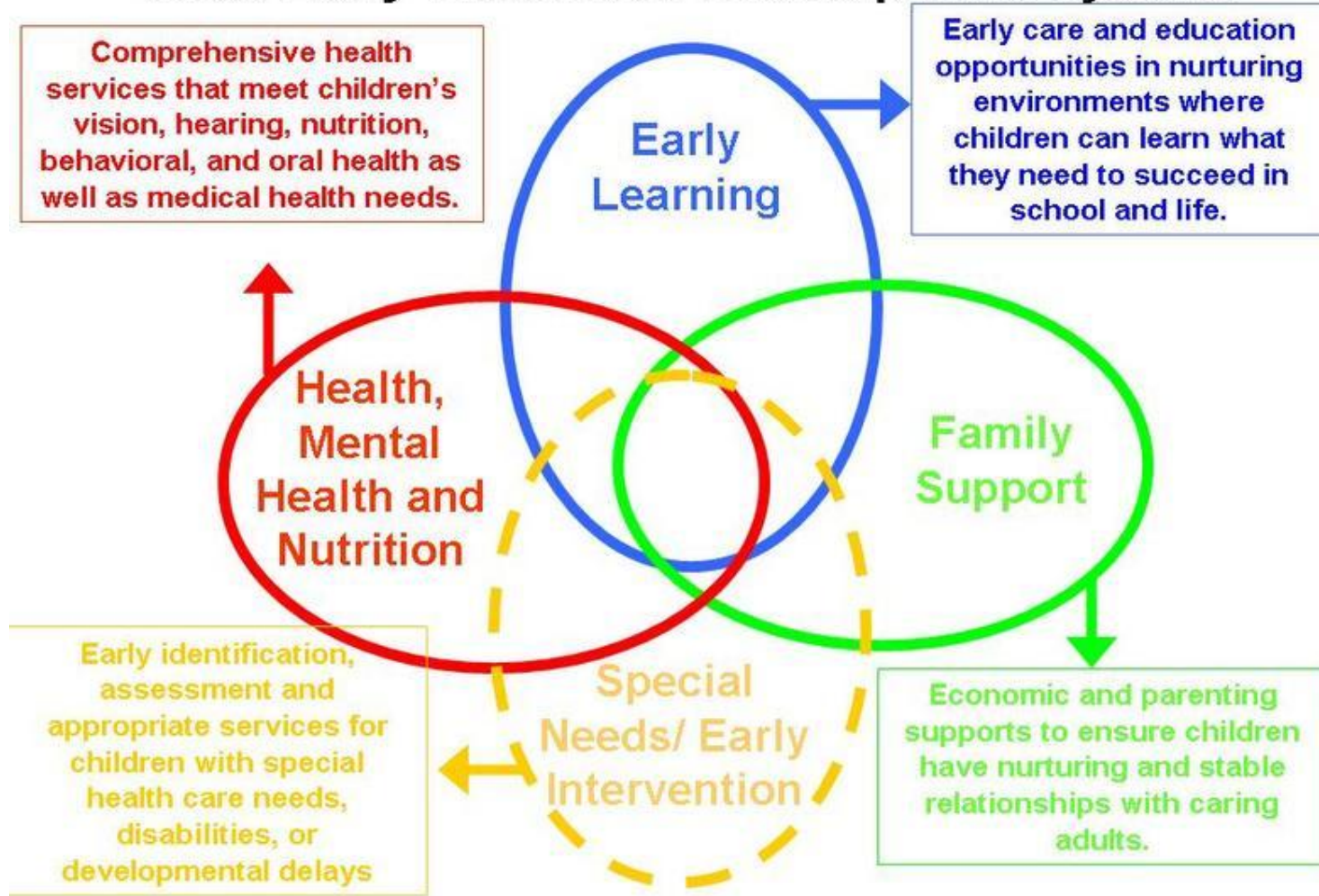
November 21, 2009

Young Children Need...

- Strong families with adequate income, time, flexibility, parenting information and support
- Access to health care (screening, medical home, health insurance)
- Quality early learning experiences
- Healthy and supportive communities

System of Services for Young Children

State Early Childhood Development System



Source: Early Childhood Systems Working Group.

Key Questions

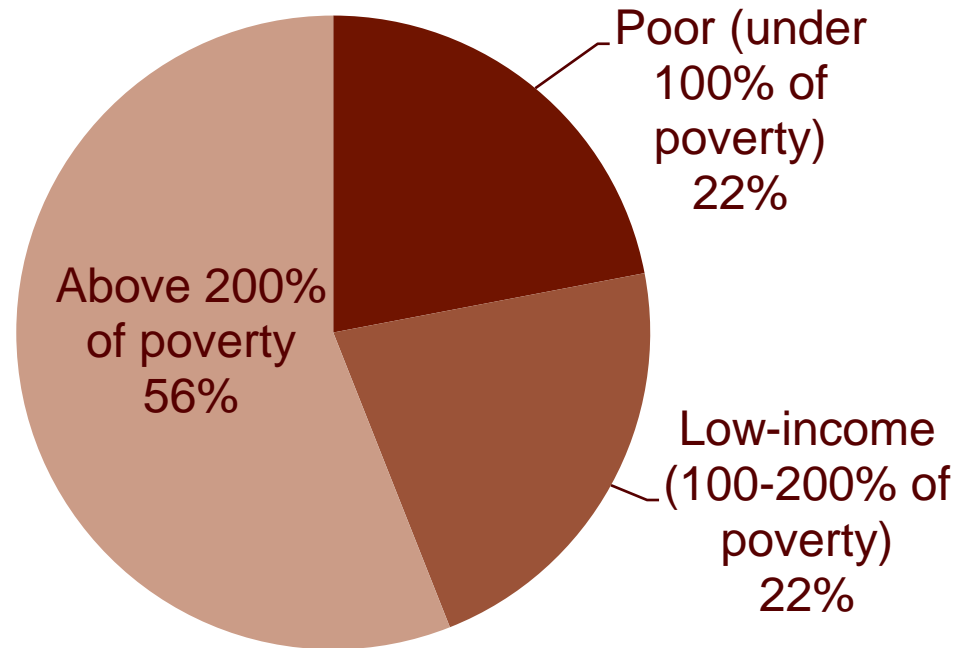
- Who are the young children in your state/community?
- Where are the children in child care and early education?
- What do children and families need to thrive?
- How can data paint a picture of child well-being in your state?



Who Are the Young Children in Your State/Community?

Many Young Children Are Poor or Low-Income...

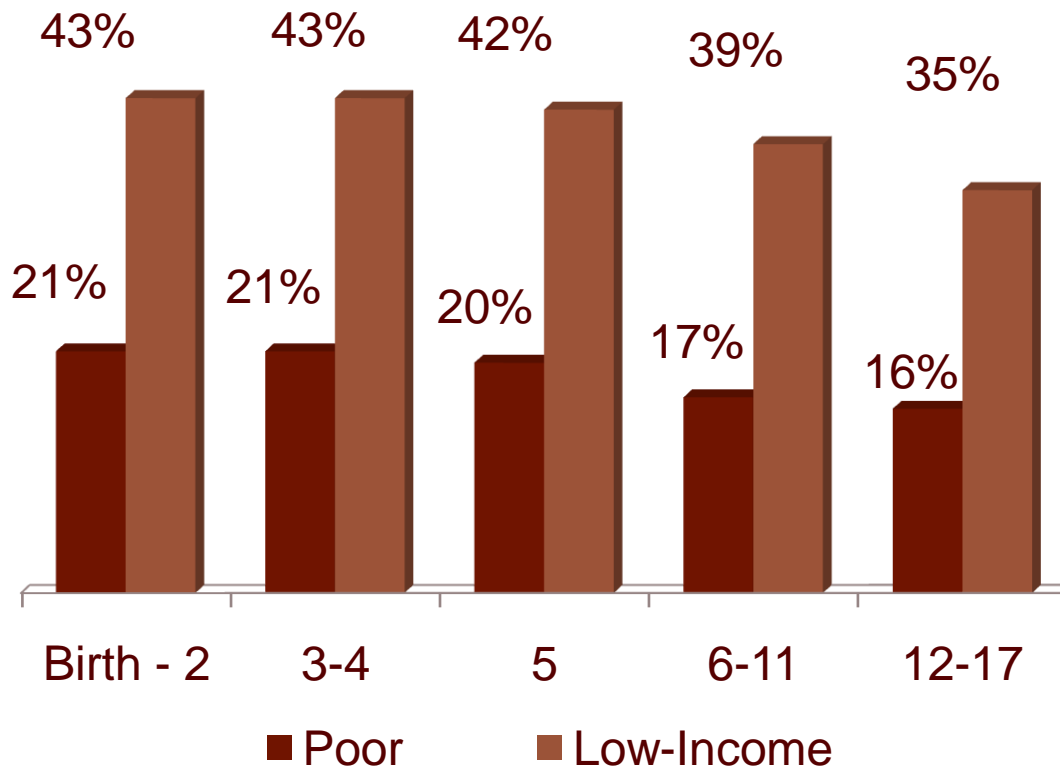
Children Under Age 6 by Family Income, 2008



Source: National Center for Children in Poverty.

...And the Youngest Children Are Most Likely to be Poor

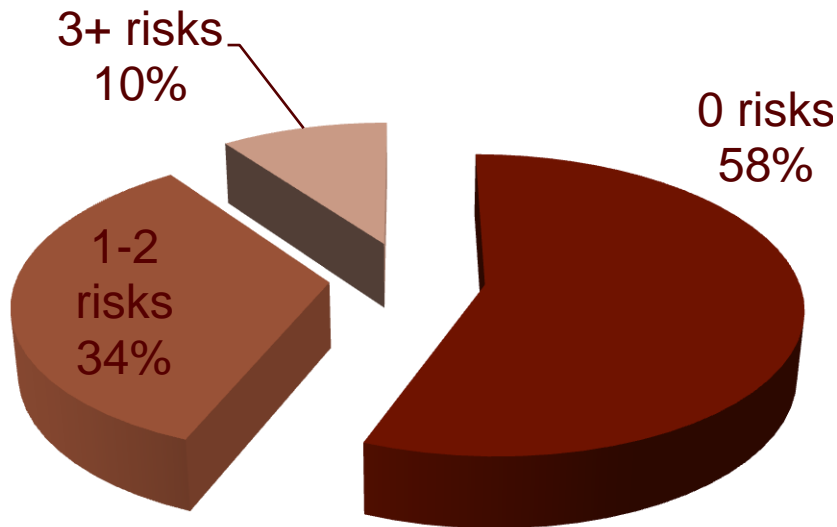
Children Living in Low-income and Poor Families in the U.S. by Age Group, 2007



Source: National Center for Children in Poverty.

Young Children Face Multiple Risk Factors for Unhealthy Development

Exposure to Multiple Risk Factors Among Young Children, 2007

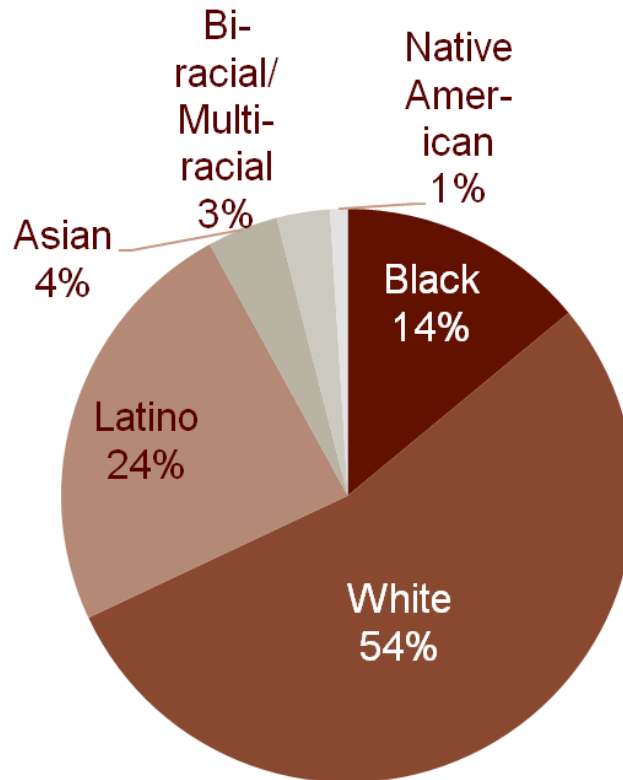


These risks include: lives in poverty, with a single parent, in households where both parents have less than a high school education, in families with parents who do not speak English well or at all; and/or has parents with no paid employment.

Source: National Center for Children in Poverty.

Young Children Are Racially/Ethnically Diverse...

Children Under Age 6 by Race/ethnicity, 2007

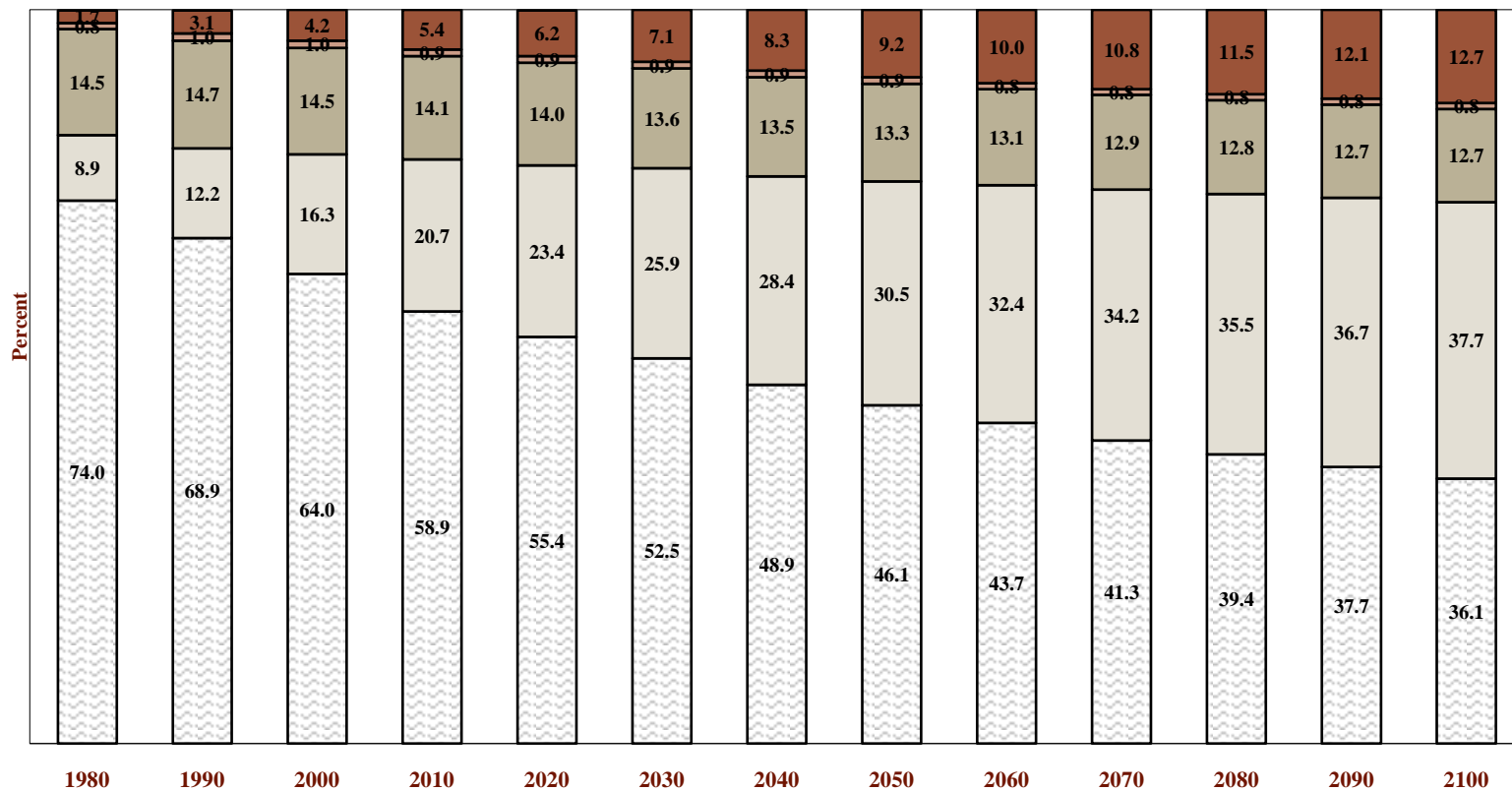


Source: National Center for Children in Poverty

Source: National Center for Children in Poverty.

...And Children of Color Are an Emerging Majority

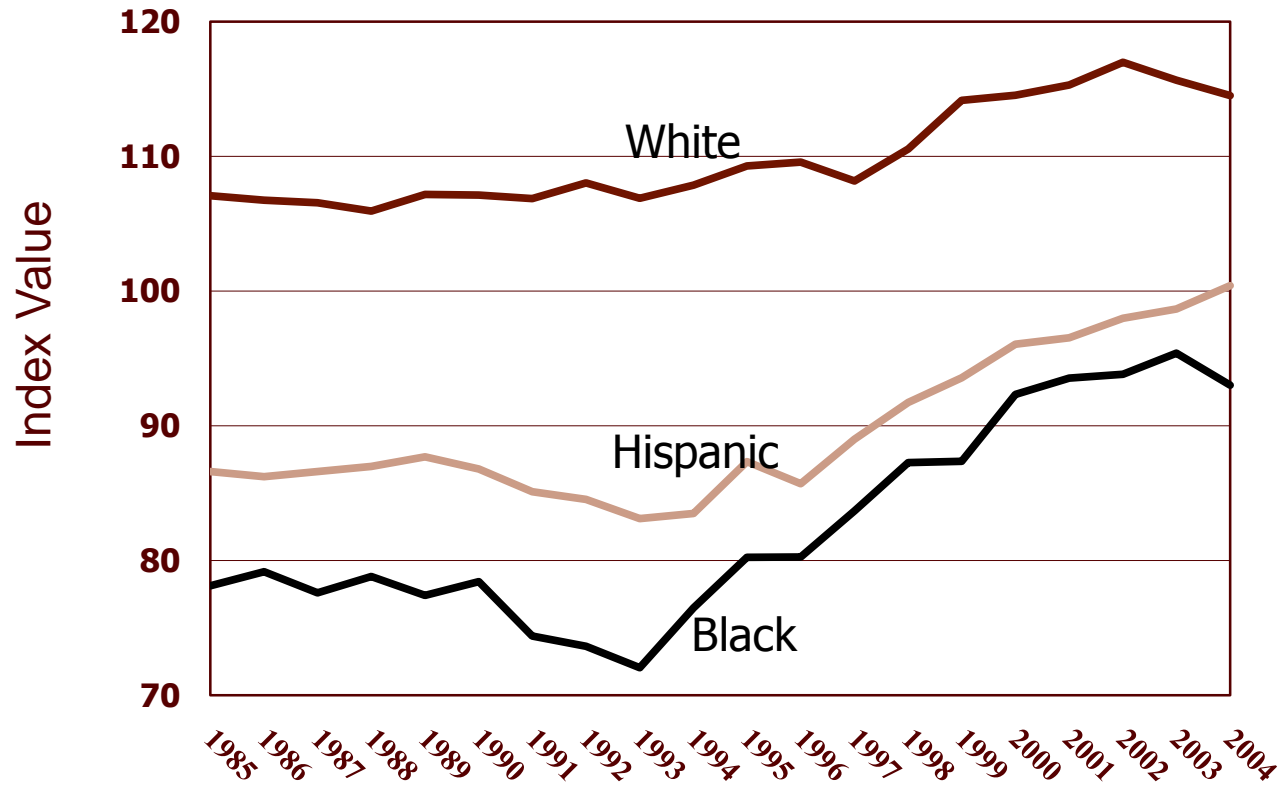
- White, Non-Hispanic
- Hispanic
- Black, Non-Hispanic
- American Indian, Non-Hispanic
- Asian/Pacific Islander, Non-Hispanic



Source: Donald Hernandez, Center for Social & Demographic Analysis, from Population Projections Program, Population Division, U.S. Census Bureau, Issued January 13, 2000.

Racial/Ethnic Disparities Endure Over Time

FCD Child Well-being Index (CWI)



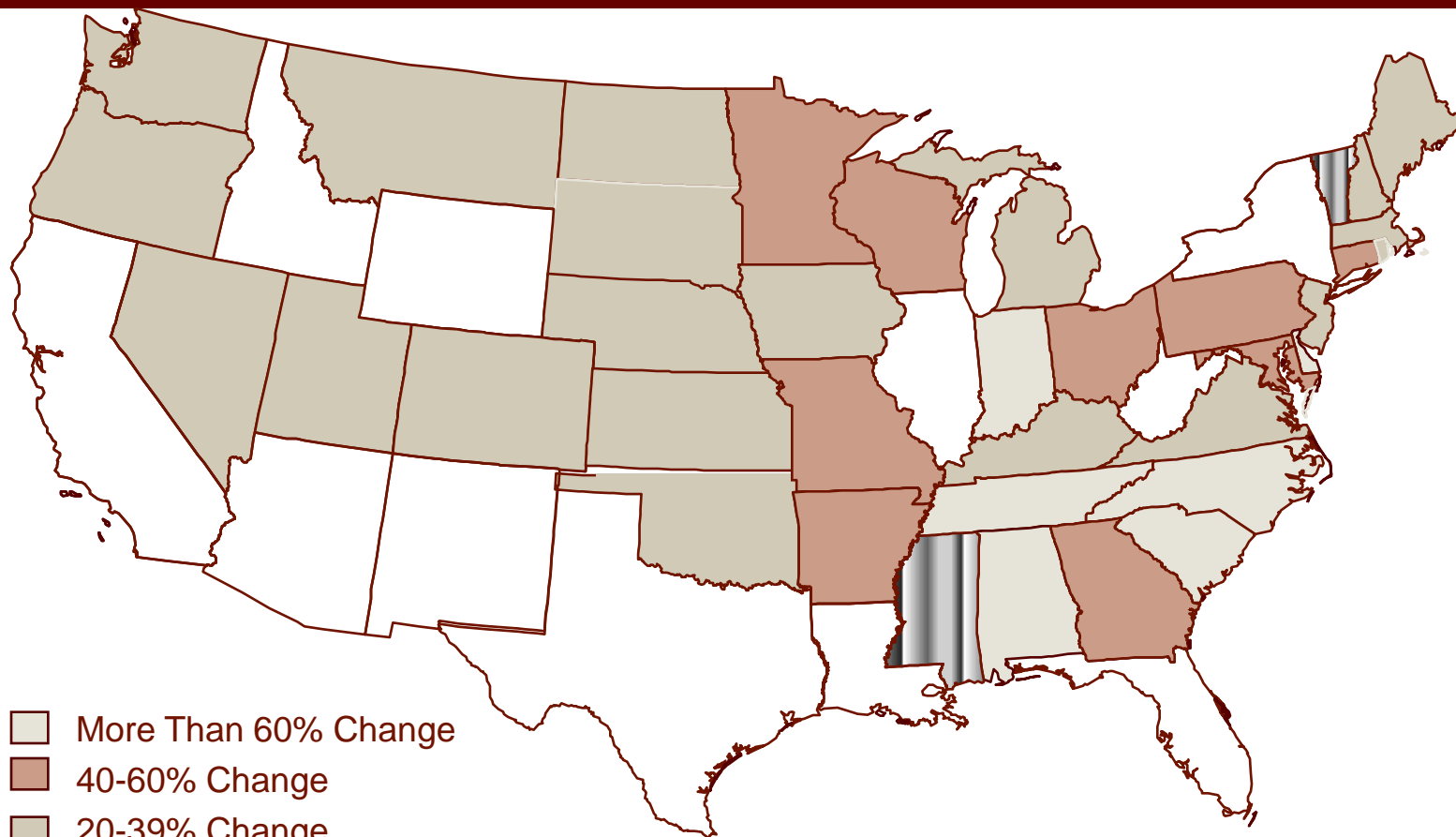
Source: "Measuring Social Disparities" (2008) by Donald J. Hernandez and Suzanne Macartney; University at Albany, SUNY.

The Immigration Context

- Children of immigrants are the fastest growing segment of the child population.
 - One out of four young children in the U.S. has an immigrant parent.
 - One out of seven young children in the U.S. has at least one limited English parent (LEP) parent.
 - One out of three young children of immigrants lives in a linguistically isolated household.
- Children of immigrants face advantages and disadvantages.

Sources: Capps et al., *The Health and Well-being of Young Children of Immigrants*, Urban Institute, 2005 and Hernandez, "Demographic Change and the Life Circumstances of Immigrant Families," *The Future of Children*, 2004.

Percent Increase in Population of Children of Immigrants, Under Age 6, 2000-2007

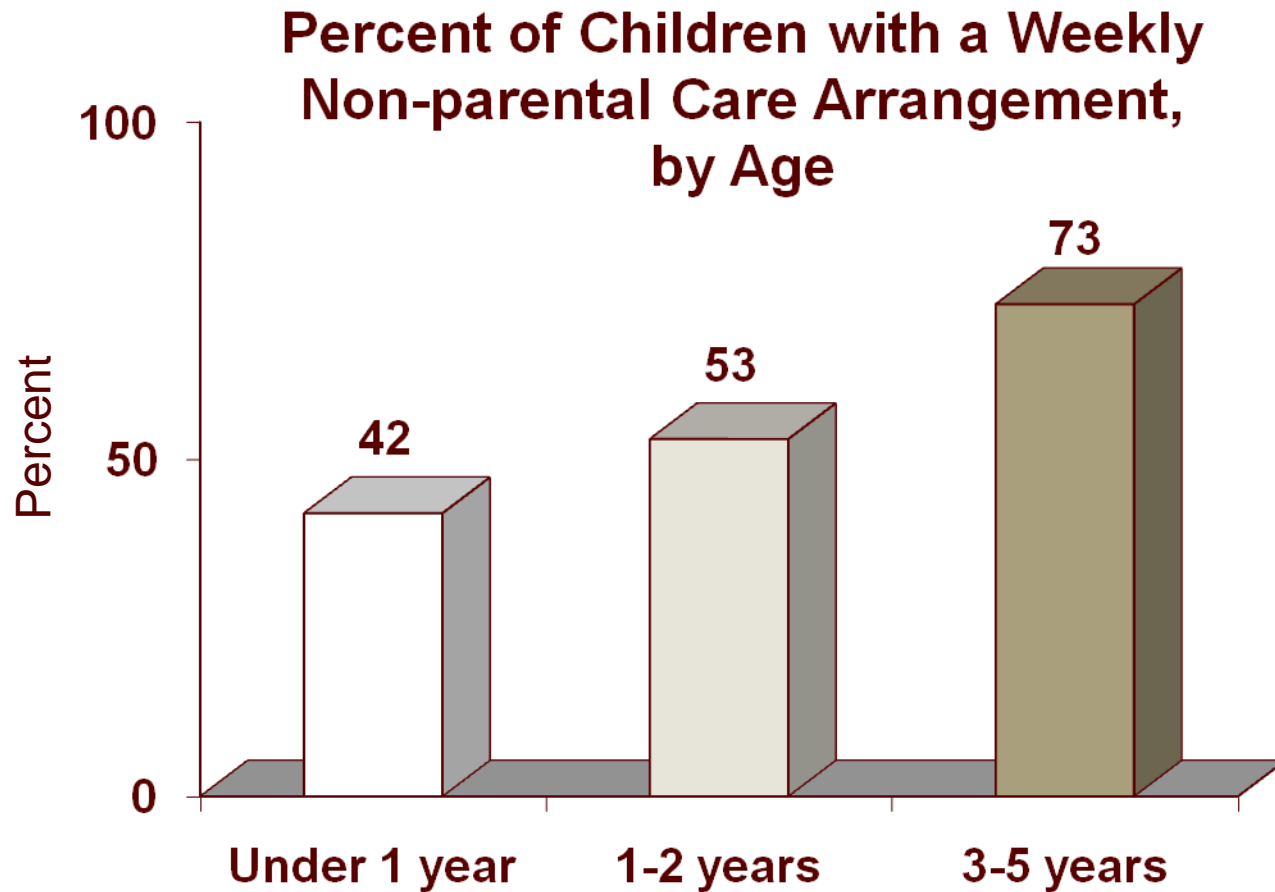


- More Than 60% Change
- 40-60% Change
- 20-39% Change
- 0-20% Change
- Negative Change (MS: -29%, VT: -33%)

Source: Migration Policy Institute, MPI Data Hub, 2007 American Community Survey and Census Data on the Foreign Born by State, <http://www.migrationinformation.org/datahub>.

Where Are the Children in Child Care and Early Education?

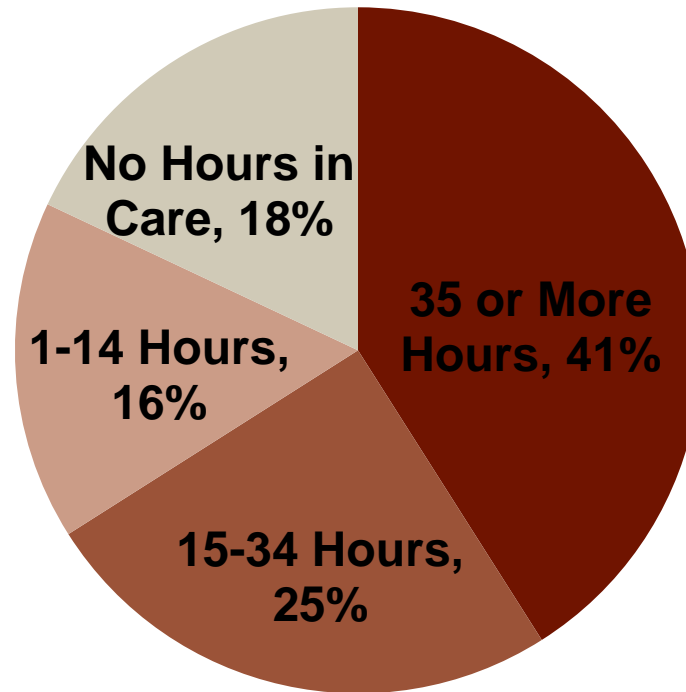
Many Young Children Are in Care...



Source: National Center for Education Statistics, 2005 National Household Education Survey.

...For Significant Portions of Time...

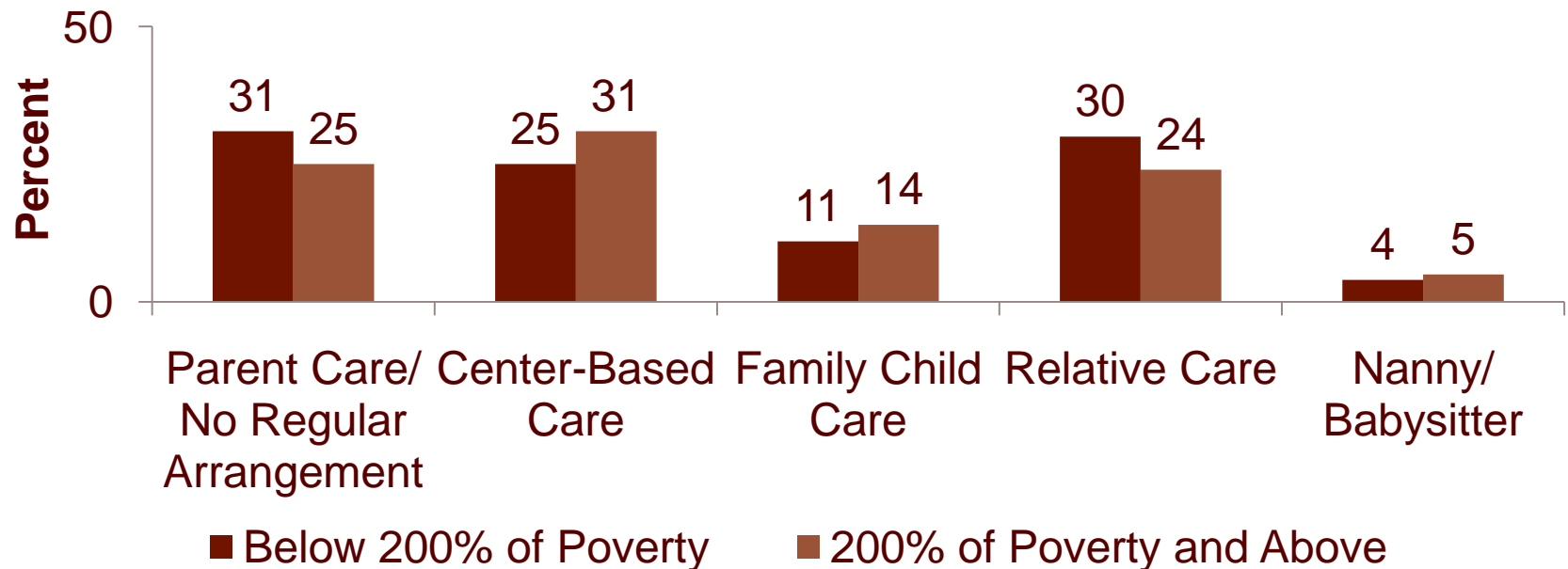
Hours Spent in Non-parental Child Care by Children Under 5 with Employed Mothers



Source: Urban Institute calculations from 1997 National Survey of Families. Capizzano, J., & Adams, G. (2000). *The Hours that Children under Five Spend in Child Care*. Washington, DC: The Urban Institute.

...And in Diverse Settings

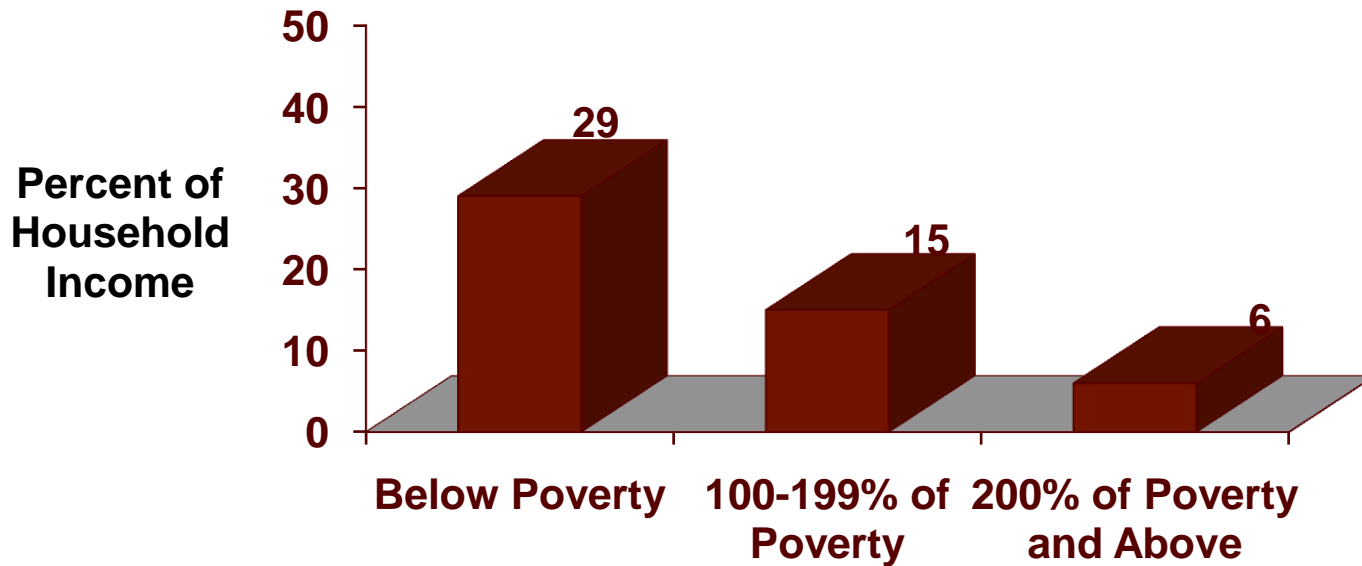
Primary Child Care Arrangements for Children 0-5 With Employed Mothers



Source: Urban Institute, 2002 National Survey of America's Families.

Child Care is Expensive, Particularly for Poor Families

Monthly Child Care Expenditures of Families with Employed Mothers as a Percent of Household Income



Source: U.S. Census Bureau, *Who's Minding the Kids? Child Care Arrangements: Winter 2002*. 2005.

Federal Programs Serve a Fraction of Eligible Children

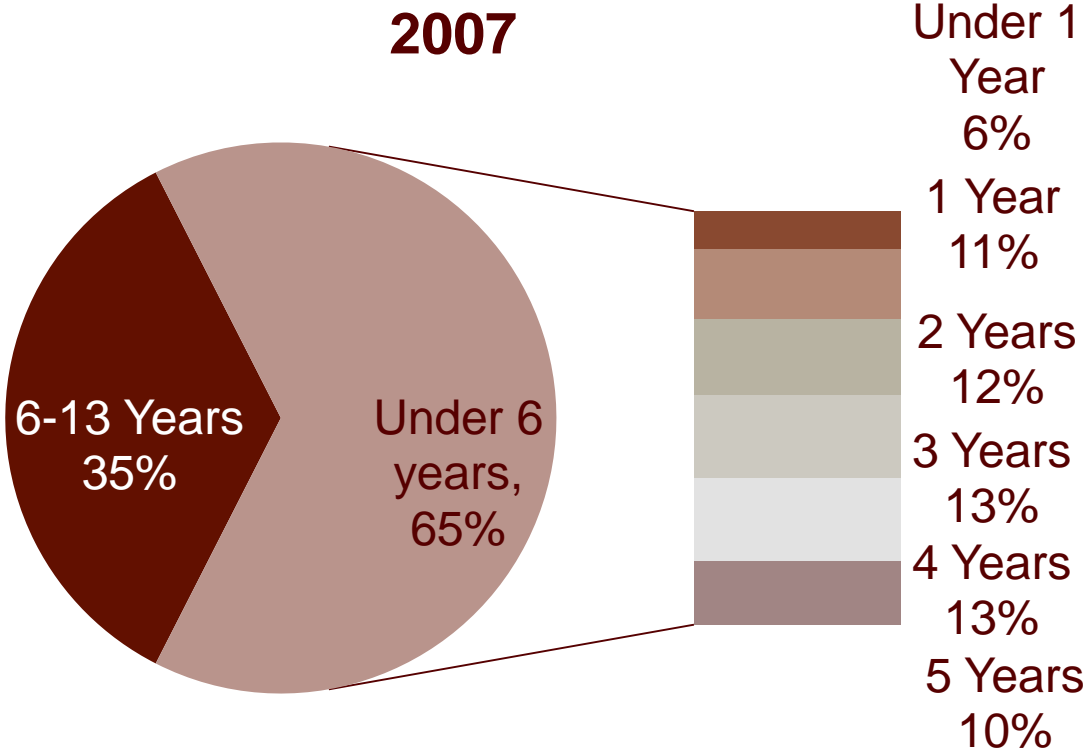
- Head Start serves 51 percent of eligible preschoolers and less than 3 percent of eligible infants and toddlers in Early Head Start.
- Child care subsidies serve 14 percent of eligible children.



Source: Analysis by NWLC and CLASP.

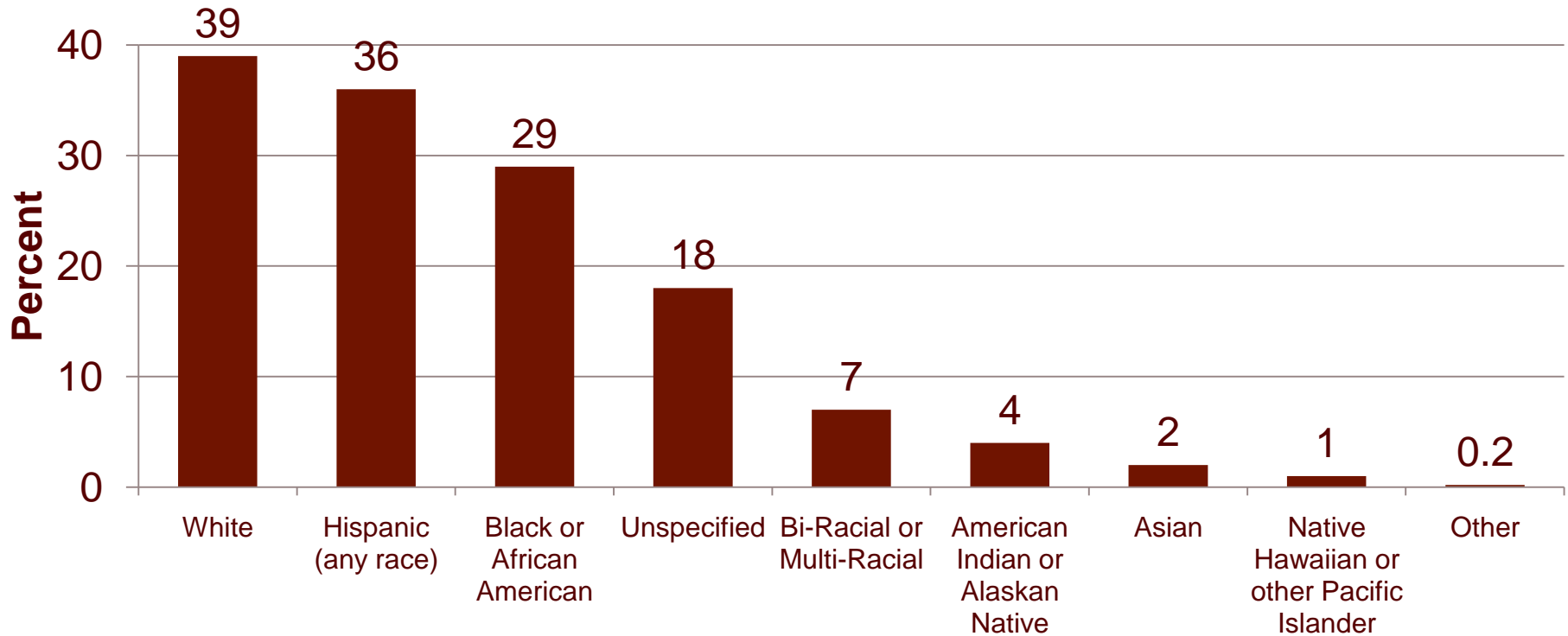
Children in the Child Care and Development Block Grant (CCDBG) Program, by Age

Ages of Children Served CCDBG, 2007



Source: CLASP analysis of HHS data.

Children in Head Start, by Race/Ethnicity



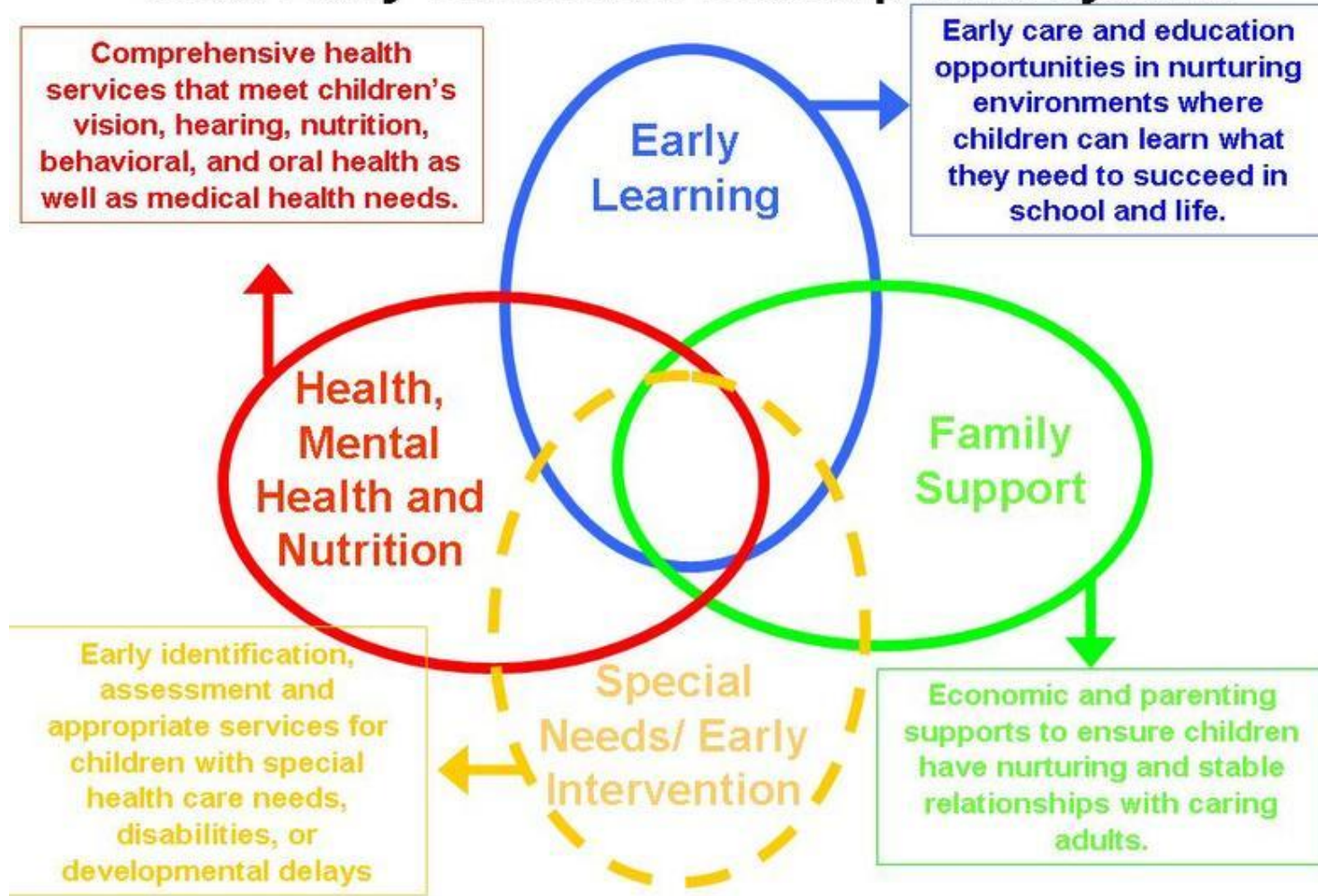
Source: CLASP calculations, 2008 PIR data.

Note: Hispanics may identify as any race, so percentages do not add to 100%.

What Do Children and Families Need to Thrive?

System of Services for Young Children

State Early Childhood Development System



Source: Early Childhood Systems Working Group.

Children Need Early Diagnosis and Treatment

- Early diagnosis and treatment lessens the impact of a developmental delay or disability on young children and families.
- In only 10 states, at least 80 percent of young children enrolled in Medicaid (ages 3-5) receive at least one developmental screening annually (EPSDT).



Source: National Center for Children in Poverty.

Children Need Access to a Medical Home

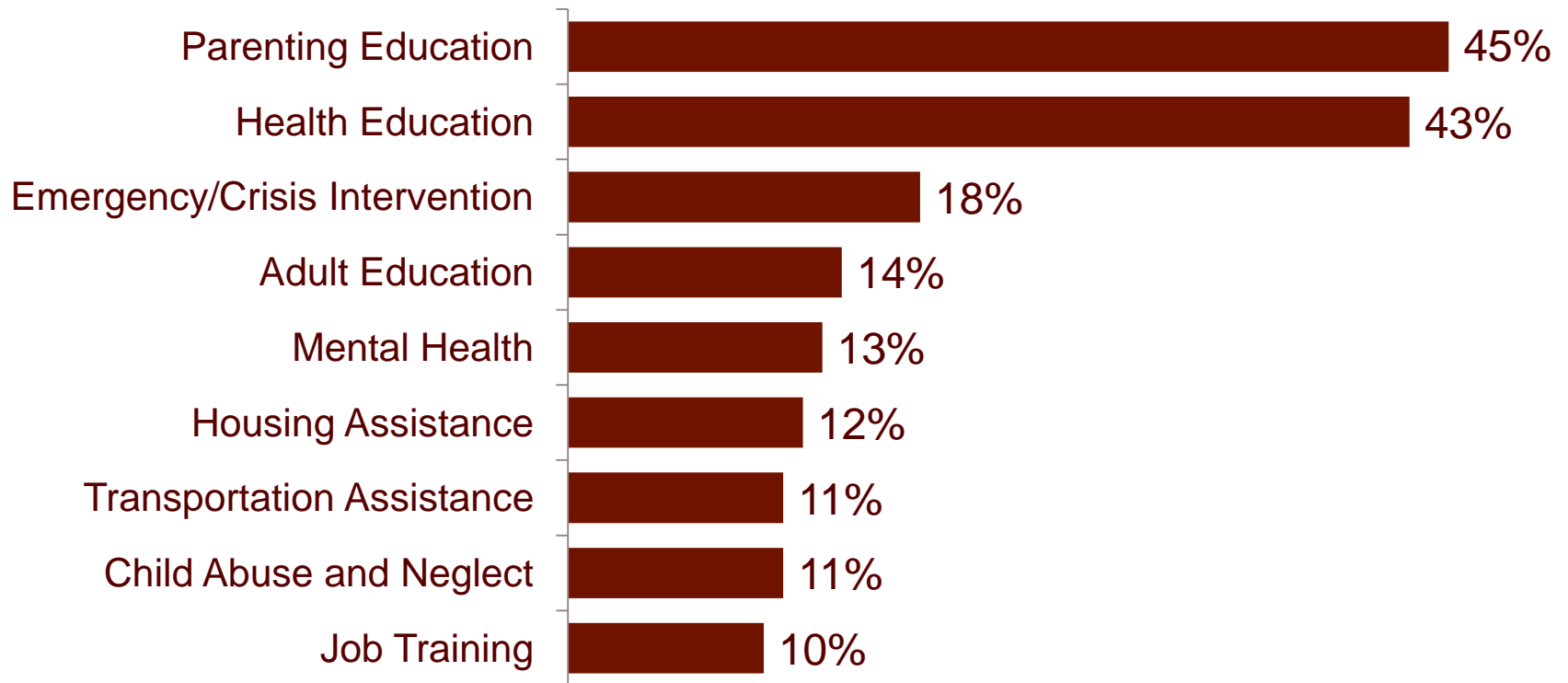
- The State Children's Health Insurance Program (SCHIP) insures 5.3 million children.
 - Yet, 18 percent of poor and 11 percent of low-income children (age 0-18) remain uninsured.



Source: National Center for Children in Poverty.

Families Living in Poverty Face a Range of Needs

Family Services Most Often Accessed by Head Start Families, 2008



Source: CLASP analysis of 2008 PIR data.

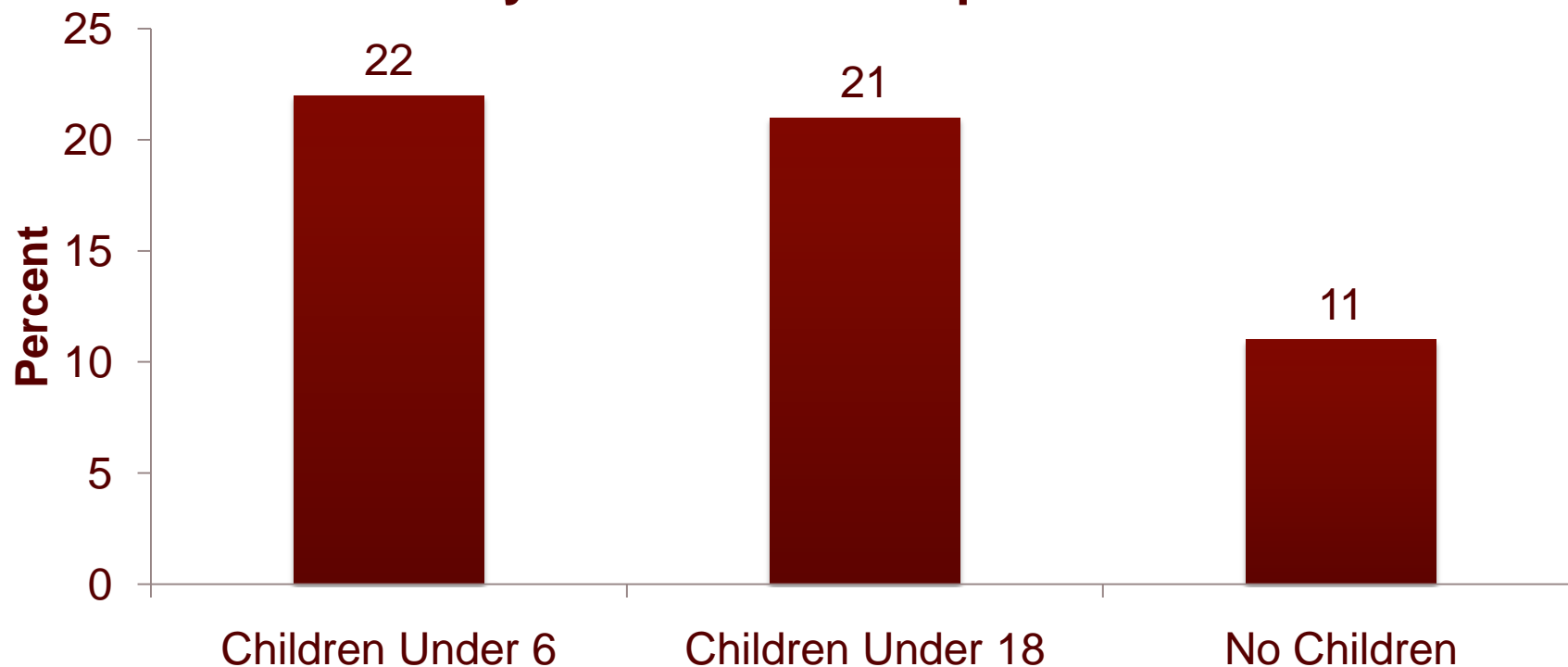
Families Need to be Food Secure

- About 13.5 million children received SNAP (formerly Food Stamps).
 - 49 percent of all SNAP recipients are children.
 - SNAP reaches approximately 65 percent of those eligible.
- In August 2009, SNAP participation was up 24 percent from previous year.

Source: USDA and Food Research Action Center (FRAC).

Households with Young Children Are More Likely to be Food Insecure

Percent of U.S. Households that are Food Insecure, by Household Composition



Source: USDA, Food Security in the United States, 2008.

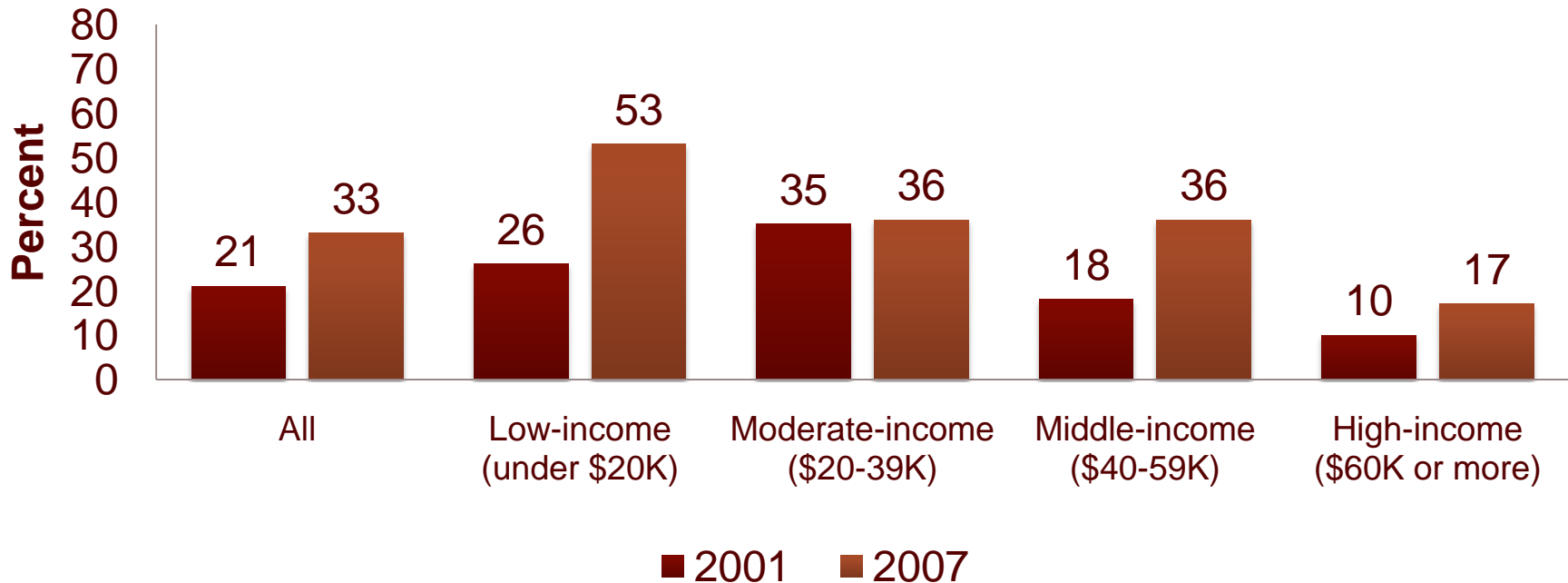
Families Need Help Meeting Basic Costs

- Basic family budgets
 - The amount needed for a family to pay for housing, food, health care, child care and other expenses is well over the federal poverty level.
 - The median basic family budget across the US was \$48,778 in 2007.
 - The federal poverty level in 2007 was \$20,650 for a family of four.

Source: Economic Policy Institute, Family Budget Calculator,
http://www.epi.org/content/budget_calculator.

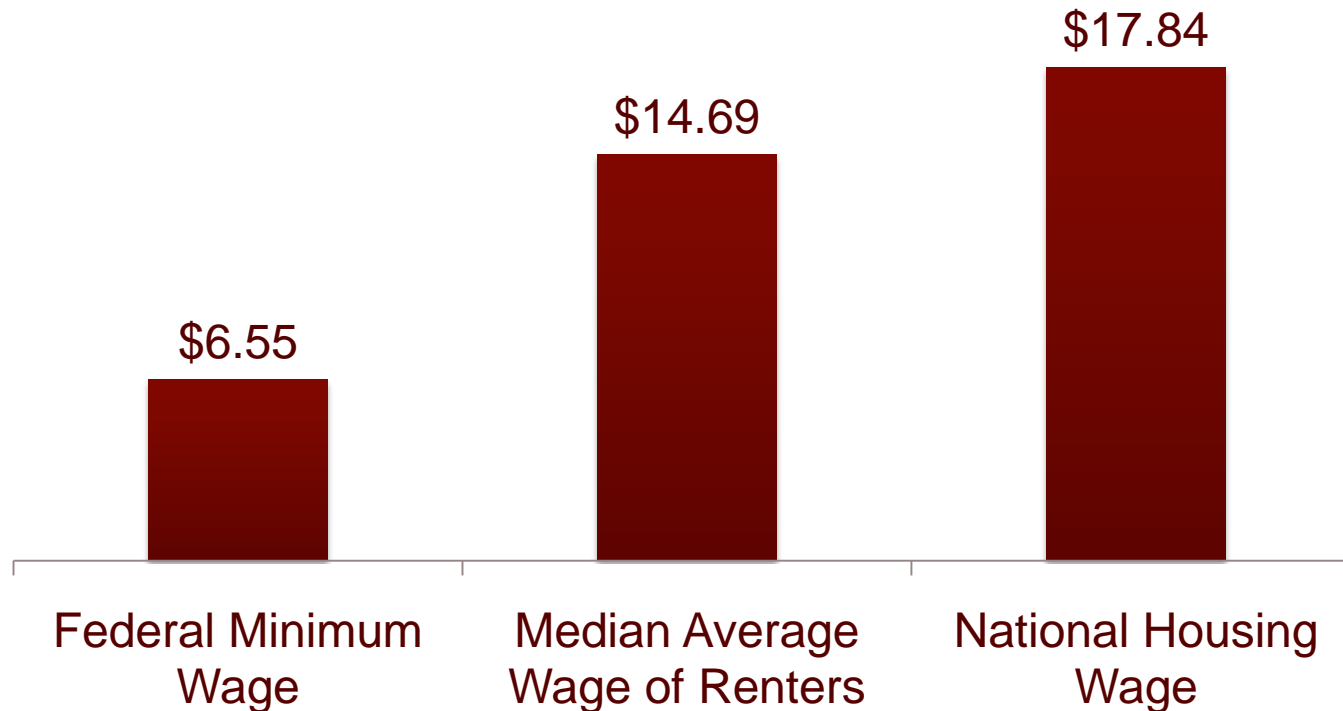
Lower-Income Families Are More Likely to Have High Health Care Costs

Percent of Adults with High Cost Burdens, by Income Group



Source: Sara Collins et al., *Losing Ground: How the Loss of Adequate Health Insurance Is Burdening Working Families—Findings from the Commonwealth Fund Biennial Health Insurance Surveys, 2001–2007*, published August 2008.

Half of All Renters Do Not Earn Enough to Afford the Average Fair Market Rent in their State



Source: National Low-Income Housing Coalition, *Out of Reach 2009*.

How Can Data Paint the Picture of Child Well-Being in Your State?

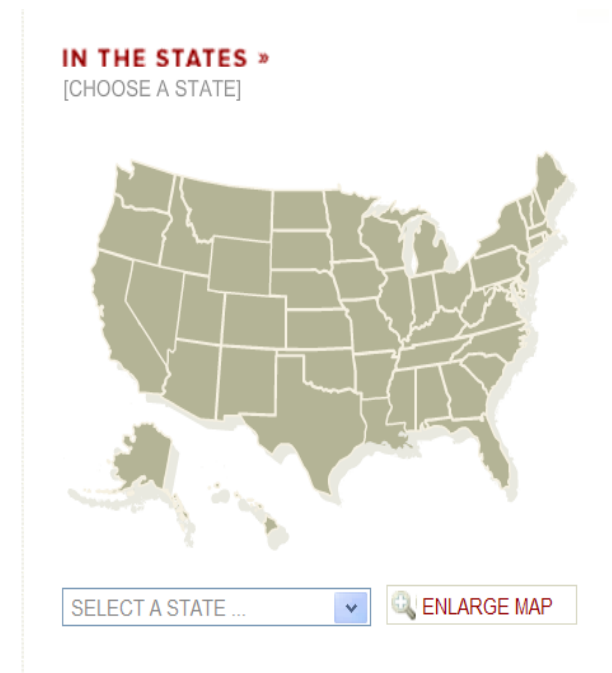
CLASP DataFinder

- www.clasp.org/data
 - Poverty
 - Young Child Demographics
 - Race, ethnicity, immigrant family status
 - Child Care spending/participation
 - Head Start/Early Head Start participation
 - TANF spending



CLASP In the States

- www.clasp.org/in_the_states/
- Find fact sheets on:
 - Head Start
 - Child Care assistance
 - TANF spending
 - Infant/toddler initiatives
 - State pre-k profiles (coming soon!)



Additional Resources

- **NCCP: Demographics Wizard**, create custom tables of national- and state-level statistics about low-income or poor children under the age of six. www.nccp.org/tools/demographics/
- **NCCP: Improving the Odds for Young Children** provides state-specific, regional, and national profiles that integrate data about an array of policies that affect early childhood development. www.nccp.org/profiles/early_childhood.html
- **Children in Newcomer and Native Families** presents a large number of indicators reflecting the characteristics of children from birth through age 17 in immigrant families by country or region of origin and in native-born families by race-ethnicity. http://mumford.albany.edu/children/data_list_open.htm
- **FRAC's Federal Food Programs State Profiles** include information on state demographics, poverty, food insecurity, participation in federal nutrition programs, and state economic security policies. www.frac.org/html/federal_food_programs/federal_index.html.
- **NCSL State Early Care and Education Legislative Database** provides information on all proposed and enacted legislation covering early care and education including child care, prekindergarten, family support. www.ncsl.org/programs/cyf/ECELD.cfm

What Does It All Mean?



Tell Your Story

- What is the state of young children in your community?
- Where are the unmet needs and gaps in services (particular age groups, demographic groups, programs and services)?
- How are early childhood programs helping families connect to needed resources?



Contact Information

More information at www.clasp.org

Contact us:

Danielle Ewen, dewen@clasp.org

Hannah Matthews, hmatthews@clasp.org

Elizabeth Hoffmann, ehoffmann@clasp.org